

cube³ ULTRA

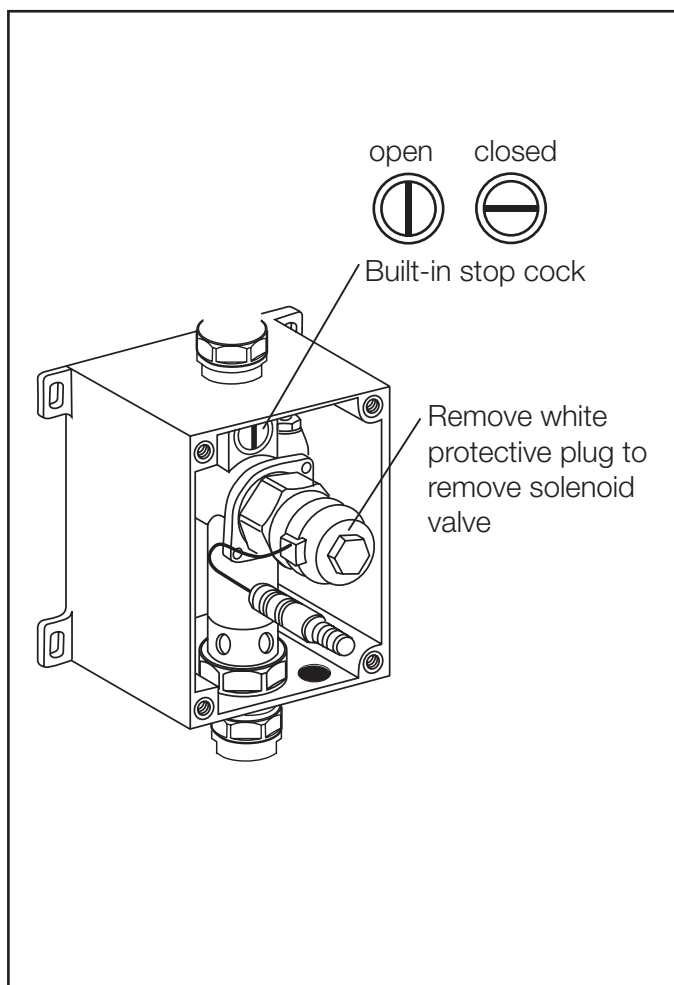
Maintenance Instructions

The urinal flush valve is a low maintenance mains flush valve. However it is recommended to clean the strainer of the solenoid valve once a year and remove any debris with a soft brush.

Procedure:

- a. Close built in stop cock (ball valve)
- b. Remove solenoid valve, clean and reinstall valve.
- c. Open stop cock to ensure water flow at inlet.
- d. Test valve for correct function.

Replace the 6 - 1.5 volt AA batteries as required depending on usage.



Issue: 2
Date: 02/05/07